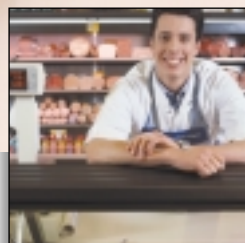
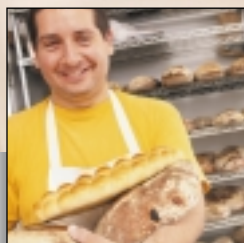


# SHARP®

# ER-A410

ELECTRONIC CASH REGISTER

**New  
Software  
Features!**



## quality and reliability that really add up

The compact, high-performance ER-A410 Electronic Cash Register is the "smart choice" for independent retailers looking for reliability, quality and value. Ideal for small retail establishments, the ER-A410 delivers exceptional flexibility and versatility, and can easily expand with your ever-changing business requirements. With Flash ROM technology, powerful built-in software, and flexible hardware options, the ER-A410 enables you to increase efficiency, enhance customer service—and better manage your business.

With easy programming, flexible expansion possibilities, and Sharp's world-famous quality and reliability, the Sharp ER-A410 offers everything you need to keep your business running efficiently—all in a compact, user-friendly, value-driven package.

### Software Features

- Up to 99 Departments with Age Verification
- Up to 1500 PLU Codes
- 10 Mix and Match Tables
- Bottle Return
- 2 Price Levels
- Validation and Endorsement Printing (with optional Slip Printer)
- Cash/Check Declarations
- Refund Keys
- Up to 9 Media Types
- Multiple Tax Tables with Currency Conversion
- Up to 2 Receive On Account/Paid Out Functions
- Up to 999 PBLU (Previous Balance Look Up)

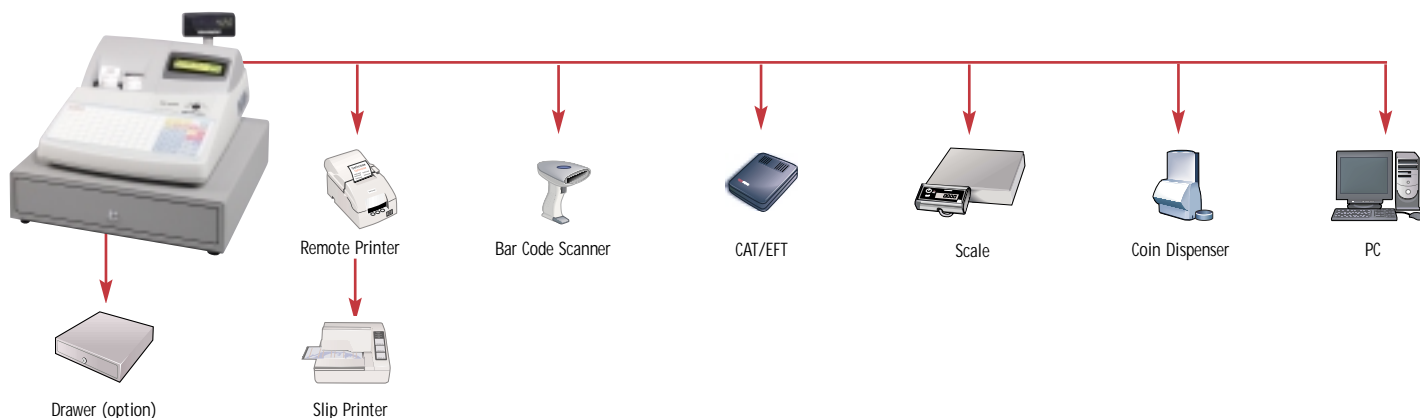
### Key Features

- UPC learning function saves time by allowing PLUs to be added instantly for improved efficiency and accuracy at the point of sale **NEW!**
- Overlap cashier function increases speed of service and enhances customer satisfaction **NEW!**
- Integrated high-speed 2-station thermal printer with logo capability
- After Transaction Receipt lowers supply costs by enabling you to print receipts on demand
- Till Timer™ and Compulsory Drawer for added security
- Crisp, clear, 2-line alphanumeric LCD display minimizes operator error
- Two built-in standard RS-232 ports for expansion using optional peripherals or communications

# ER-A410

## ELECTRONIC CASH REGISTER

### configuration



### reports

Title	Description	Title	Description
Full (General)	Combines information from departments and transaction media totals. This report is used as the audit report for your business.	Full Cashier	Provides sales and media accountability for up to (20) cashiers who have made sales entries.
Group Reports	Summarizes the department sales totalizers by its assigned department group number. Consolidates all departments into like categories to provide summary sales data analysis of your business. Allows the store owner to select a specific group number for which to analyze associated department sales data.	Individual Cashier	Allows the store owner or manager to audit each individual's sales and media accountability one person at a time.
UPC/PLU (Range)	Allows the store owner to analyze PLU sales data by a specified range of PLU codes.	Daily Net	Provides the net sales total by calendar day for a 31-day period. Business revenues are easily tracked by each day of the month.
UPC/PLU by Dept.	Allows the manager/owner to categorize the PLU sales by its associated department number.	Stacked	Prints a maximum of 15 reports in succession within a single reporting operation.
UPC/PLU Zero Sales	Lists PLU items which have not accumulated sales totalizers to identify non-moving items.	Flash	Allows the store owner or manager to view a defined total in the ECR's display for quick, up-to-the-moment analysis of that day's business. Available Flash Reports include: • Net-3 (net sales plus tax) • Department (by selected departments) • Cash-in Drawer (total cash in drawer)
UPC/PLU Price Category	Allows the PLU sales totalizers to be taken based on its unit price in a range.	CCD (cash/check declarations)	Provides a full accounting of cash and checks in drawer.
Top 20 PLU	Best Seller on Shelf; inventory management.	PLU by Stock	Allows the store owner to look at current inventory levels by PLU.
Non-Access UPC Delete Report	Helps maintain UPC file.	Commission Sales	Links a cashier to a particular department to keep track of individual sales.
Hourly (All/Range)	Provides the store owner with the number of transactions and sales total by 1-hour increments for a 24-hour period. This becomes a useful tool in determining which times during the day your business is most successful. This report can also be useful in determining when extra employees are necessary.	PBLU	In X mode allows you to print all open checks and in Z mode allows you to view open checks and to reset, monitor or track receivables.
Transaction	Provides a snap shot of accountability for the business day, which can justify collected monies for items sold.	PBLU by Cashier	Gives a report of all open checks by cashier essential for closing out house charges.

### specifications

#### DISPLAY

Operator: LCD display with backlight  
16 characters x 2 lines

Customer (pop-up): LED, 7 digit numeric/7 segments

#### PRINTER

Type: 2-station (receipt/journal) thermal

Printing Capacity: Receipt: 24 characters maximum  
Journal: 24 characters maximum

Printing Speed: Approximately 13.3 lines per second

Logo Message Text: 6 line message maximum

Graphic Logo Capability: Yes

Paper Width: 1.75" ± .02" (44.5 mm ± 0.5mm)

Thickness: .06 mm to .08 mm paper thickness

Paper Roll Diameter: 3.15" (80 mm) maximum

Paper Type: Thermal

Other Printing Functions:  
• Receipt and journal independent feed function  
• Print stop function  
• Paper end sensor

#### DRAWER

Bill: 5 compartments

Coin: 5 compartments

Other Drawer: Security lock

Features:  
• Drawer open sensor  
• Pull out cash till  
• Heavy duty metal construction

Option: 2nd cash drawer

#### KEYBOARD

Type: Raised

Number of Keys: Standard 61/maximum 82

#### COMMUNICATIONS

Type: (2) RS-232

Connectivity: Can connect to optional peripherals such as scale, coin dispenser, credit card authorization terminal, PC, slip printer, remote printer and bar code scanner

#### GENERAL

Dimensions: 16.5" (w) x 16.8" (d) x 11.7" (h)

Weight: 29.1 lbs.

Power Consumption: 46.5 W (maximum)/9 W (standby)

Power Source: 120V +/-10% AC/60 Hz

#### OPTIONAL ACCESSORIES

- ER-11DK7G: 1 x 1 dummy key
- ER-51DK7G: 5 x 1 dummy key strip
- ER-11KT7: 1 x 2 department key expansion kit (30 ea.)
- ER-12KT7: 2 x 2 department key expansion kit (30 ea.)
- ER-22KT7: 1 x 1 department key expansion kit (10 ea.)
- ER-04DW: Optional cash drawer unit
- ER-55CC2: Optional coin case (5B/5C)

Design and specifications are subject to change without notice.

Sharp is a registered trademark of Sharp Corporation.

All other trademarks are the property of their respective owners.

ECR-982 3/04

*Distributed by:*

Sharp Electronics Corporation  
POS Sales Division  
Sharp Plaza, Mahwah, NJ 07430-2135  
1-800-BE-SHARP  
[www.sharppusa.com](http://www.sharppusa.com)

**SHARP**  
[www.cashregisters.net](http://www.cashregisters.net)